

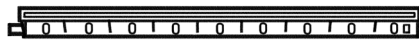


# GUN WINDOW

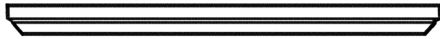
## Installation Instructions

### Silent Shadow Window System

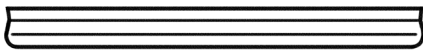
**Tools Needed:** Cordless Drill • Square Drive Bit • Tape Measure • Saw



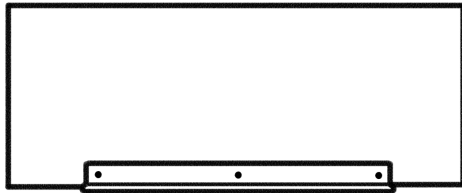
Interior Shield Track



Exterior Shield Track



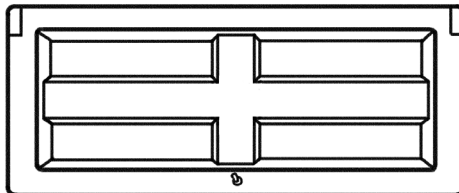
Exterior Drip Cap



Interior Glass Panel

**Screws & hardware included for two window system:**

- [16] #8 x 1" Washer Head Screws  
Use 3 screws per interior glass hinge.
- [50] #8 x 3/4" Pan Head Screws  
Use 3 screws per exterior track.  
Use 5 screws per drip cap, evenly spaced.
- [8] Rubber Stop Screws  
Use 1 screw under each track.  
(interior & exterior)
- [2] Interior Glass Panel
- [2] Window Shield with Draw Cord
- [2] Drip Cap
- [4] Exterior Shield Tracks
- [4] Interior Shield Tracks
- [2] Speed Cinch®



Exterior Window Shield with Draw Cord

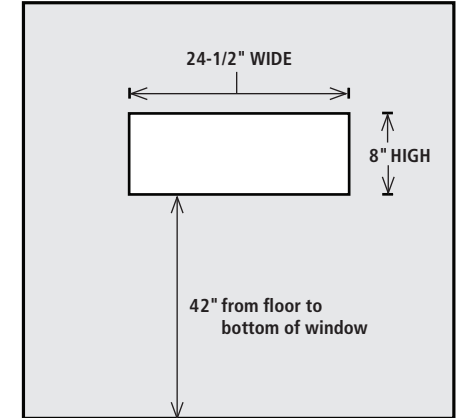


**STEP 1. PREPARING YOUR BLIND**

Mark the intended position of your window using the measurements indicated here.

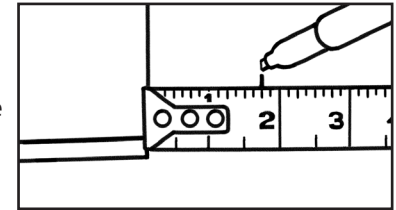
You can opt to center a single blind opening on your wall, or you can place two windows side by side. If installing two windows, position them about 6 inches apart.

Cut the window frame.



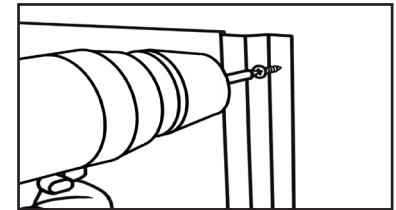
**STEP 2. INSTALL THE EXTERIOR SHIELD TRACKS**

**2A** - On each of the 8" sides, measure over 1-3/4" at the top and bottom corners. Be sure to mark all four spots.

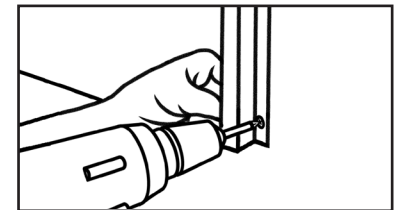


**2B** - Using the marks as a guide, position the first exterior shield track along one side of the window opening. Raise the channel about 1/8" above the top of the window. Use 1 pan head screw to hold the exterior track in place.

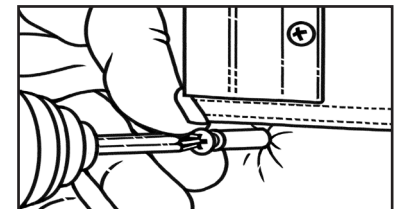
Repeat step 2B on the opposite side.



**2C** - Make sure each track is aligned at the top and bottom of the window opening. Use a total of 3 pan head screws to fasten each track in place.



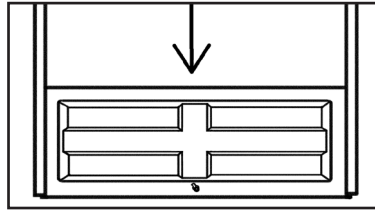
**2D** - Install the rubber stop screws just under each shield track. Check to make sure the shield is level once both stop screws are in place.



(Gun window instructions continue on the other side)

### STEP 3. INSTALL THE EXTERIOR SHIELD

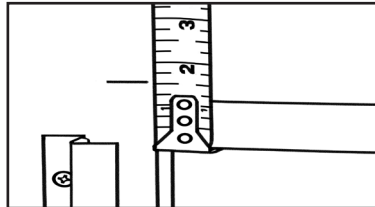
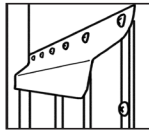
Drop the exterior shield into place behind the exterior shield tracks. The cord hole should be on the bottom of the shield.



### STEP 4. INSTALL THE EXTERIOR DRIP CAP

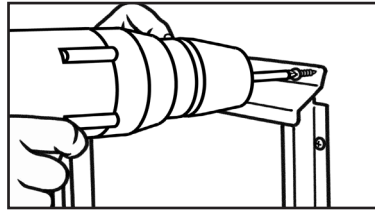
**4A** - It is critical to place the Drip Cap on top of the Shield Track as seen in the image.

Begin by making guide marks 1-9/16" above the window.



**4B** - Secure the drip cap on the right side with 1 pan head screw. Then, make sure the drip cap is level and rests on the marks. If so, secure with another pan head screw.

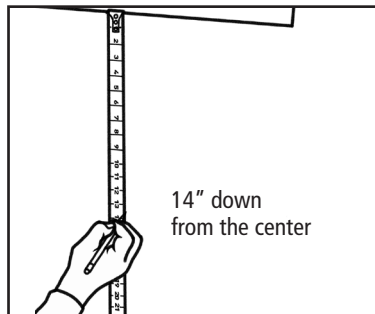
Use 5 evenly spaced pan head screws to finish securing the Drip Cap.



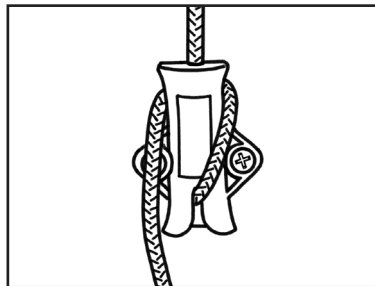
### STEP 5. INSTALL THE INTERIOR DRAW CORD LOCK

**5A** - Pull the shield up and down a few times to center the cord in the window.

Once you've found the center, let the shield down. Then measure 14" down from the center and mark the position.

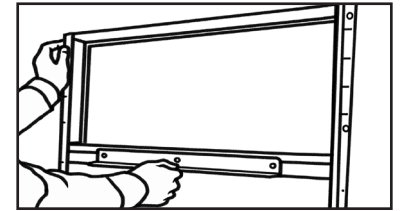


**5B** - Position the bracket over the mark, and place the tube in a vertical position. The notch should be at the bottom. Secure the Speed Cinch® with two #8 x 1" screws. Run cord through the tube.

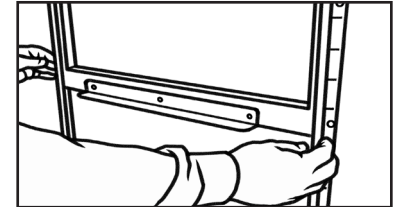


### STEP 6. INSTALL THE INTERIOR GLASS AND TRACK

**6A** - Slide the plastic glass tracks onto each side of glass panel.

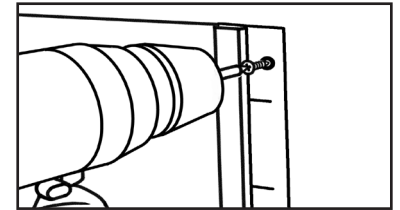


**6B** - Hold the glass and tracks over the window opening, making sure it is even on both sides. Hold top of glass about 3/4" above the top of the window opening.

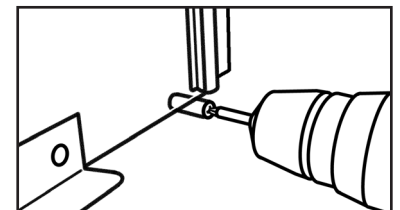


**6C** - Using washer head screws, secure one track on the right side of the window (top and bottom). On the left side of the window, place 1 washer head screw in the top hole of the opposite track.

Lower the glass to make sure it is level and will slide smoothly.



**6D** - Secure bottom screw. Lower glass about 1/2" below the bottom of the window opening. Add a rubber stop screw under each track.



**Gun Window - Silent Shadow Window System**

**SUMMIT OUTDOORS, LLC**

7201 Engle Rd., Fort Wayne, IN 46804 • Toll Free: 1-888-446-4868 Fax: 260-483-2070

[www.shadowhunterblinds.com](http://www.shadowhunterblinds.com)