

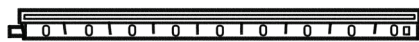


# CROSS BOW WINDOW

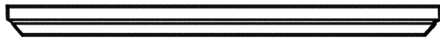
## Installation Instructions

### Silent Shadow Window System

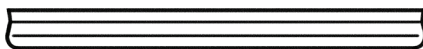
**Tools Needed:** Cordless Drill • Square Drive Bit • Tape Measure • Saw



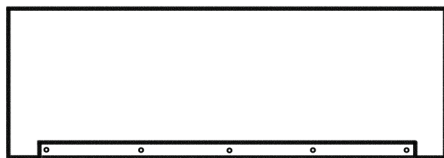
Interior Glass Track



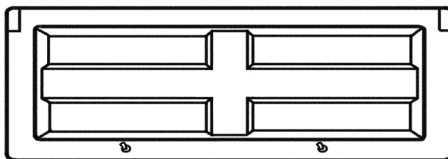
Exterior Shield Track



Exterior Drip Cap



Interior Glass Panel



Exterior Window Shield with Draw Cord

#### Screws & hardware included for one window system:

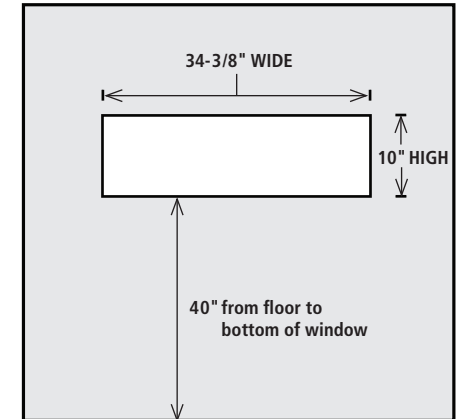
- [10] #8 x 1" Washer Head Screws  
Use 3 screws per interior glass track.
- [13] #8 x 3/4" Pan Head Screws  
Use 3 screws per exterior track.  
Use 7 screws per drip cap, evenly spaced.
- [1] Rubber Window Shield Stops
- [1] Interior Glass Panel
- [1] Window Shield with Draw Cord
- [1] Drip Cap
- [2] Exterior Shield Tracks
- [2] Interior Glass Panel Tracks
- [2] Speed Cinch®



#### STEP 1. PREPARING YOUR BLIND

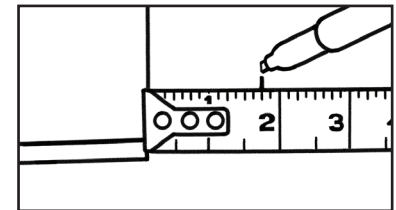
Mark the intended position of your window using the measurements indicated here.

Cut the window frame.



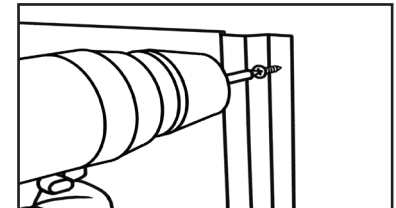
#### STEP 2. INSTALL THE EXTERIOR SHIELD TRACKS

**2A** - On each of the 10" sides, measure over 1-3/4" at the top and bottom corners. Be sure to mark all four spots.

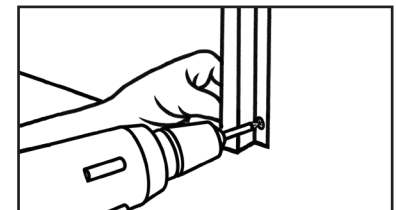


**2B** - Using the marks as a guide, position the first exterior shield track along one side of the window opening. Raise the channel about 1/8" above the top of the window. Use 1 pan head screw to hold the exterior track in place.

Repeat step 2B on the opposite side.

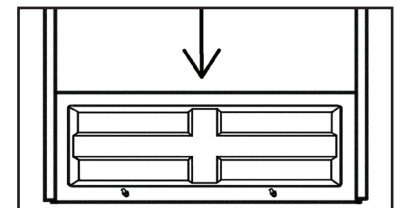


**2C** - Make sure each track is aligned at the top and bottom of the window opening. Use a total of 3 pan head screws to fasten each track in place.



#### STEP 3. INSTALL THE EXTERIOR SHIELD

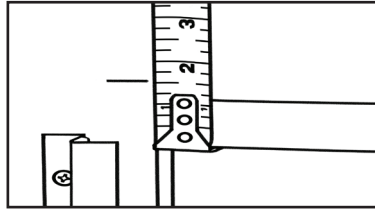
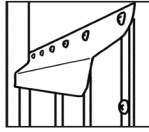
Drop the exterior shield into place behind the exterior shield tracks. The cord hole should be on the bottom of the shield.



#### STEP 4. INSTALL THE EXTERIOR DRIP CAP

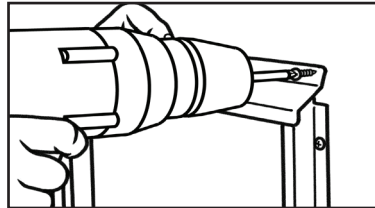
**4A** - It is critical to place the Drip Cap on top of the Shield Track as seen in the image.

Begin by making guide marks 1-9/16" above the window.



**4B** - Secure the drip cap on the right side with 1 pan head screw. Then, make sure the drip cap is level and rests on the marks. If so, secure with another pan head screw.

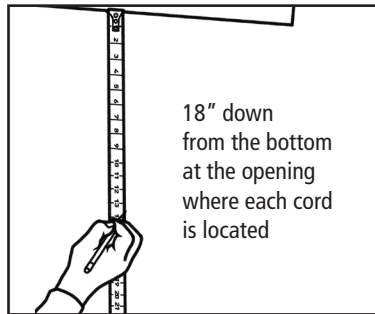
Use 7 evenly spaced pan head screws to finish securing the Drip Cap.



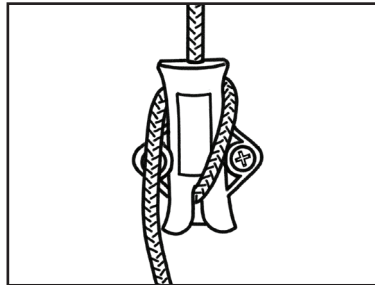
#### STEP 5. INSTALL THE INTERIOR DRAW CORD LOCKS

**5A** - Pull the shield up and down a few times to center the cord in the window.

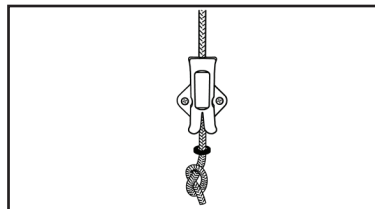
Once you've found the correct position for each cord, let the shield down. Then measure 18" down from the bottom at the opening where each cord is located and mark the position.



**5B** - Position the brackets over each mark, and place the tube in a vertical position. The notch should be at the bottom. Secure the Speed Cinch® with two #8 x 1" screws. Run cord through the tube.

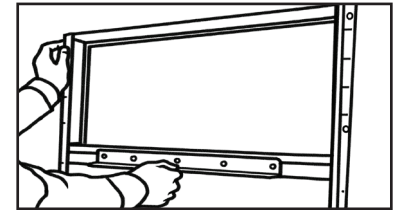


**5C** - Run the cord through the speed cinch tube. Then thread the cord through the rubber shield stop. Now tie a knot at the end of the cord. You may need to adjust the knot to make sure the shield is at or just below the window.

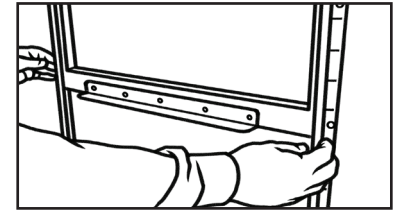


#### STEP 6. INSTALL THE INTERIOR GLASS AND TRACK

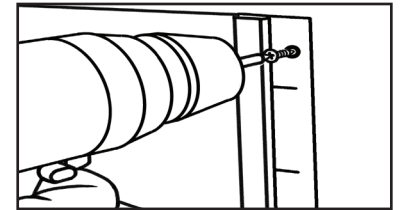
**6A** - Slide the plastic glass tracks onto each side of glass panel.



**6B** - Hold the glass and tracks over the window opening, making sure it is 2 1/2" down from the top of window opening.



**6C** - Using washer head screws, secure one track on the right side of window (top and bottom). On the left side of the window, place one washer head screw in the top hole of the opposite track. Lower the glass to ensure the glass is level and will slide smoothly. Secure the bottom of track with a washer head screw. Place the third screw in middle of both tracks.



11/2018



**Cross Bow Window - Silent Shadow Window System**

**SUMMIT OUTDOORS, LLC**

Fort Wayne, IN 46804 • Toll Free: 1-888-446-4868 Fax: 260-483-2070

[www.shadowhunterblinds.com](http://www.shadowhunterblinds.com)