



# ARCHERY WINDOW

## Installation Instructions

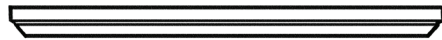
### Silent Shadow Window System

**Tools Needed:** Cordless Drill • Square Drive Bit • Tape Measure • Saw • Staple Gun

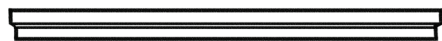


**Screws & hardware included for one window systems:**

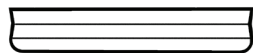
- [16] #8 x 1" Washer Head Screws  
Use 3 screws per interior glass track.
- [30] #8 x 3/4" Pan Head Screws  
Use 6 screws per exterior shield track.  
Use 3 screws per drip cap, evenly spaced.
- [2] Rubber Window Shield Stops
- [2] Interior Hinged Glass Panel
- [2] Window Shield with Draw Cord
- [2] Drip Cap
- [4] Exterior Shield Tracks
- [4] Exterior Shield Tracks Extensions
- [2] Speed Cinch®
- [6] Window Latches



Exterior Shield Track



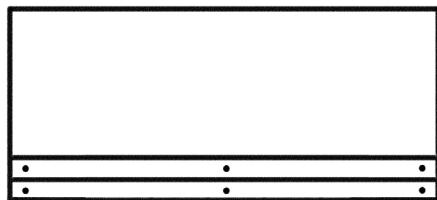
Exterior Shield Track Extensions



Exterior Drip Cap



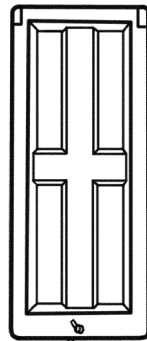
Window Latch



Interior Hinged Glass Panel



Speed Cinch®

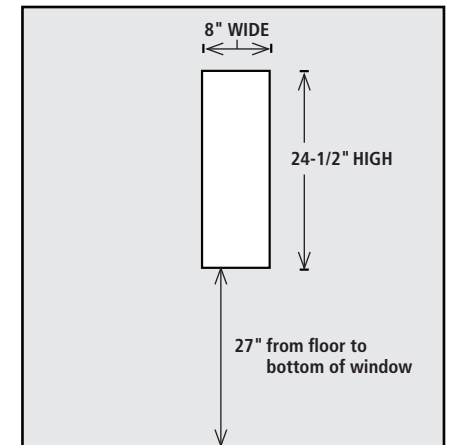


Exterior Window Shield with Draw Cord

**STEP 1. PREPARING YOUR BLIND**

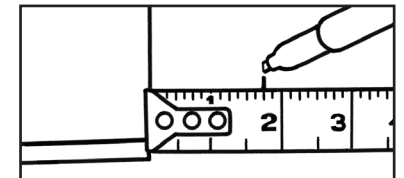
Mark the intended position of your window using the measurements indicated here.

Cut the window frame.

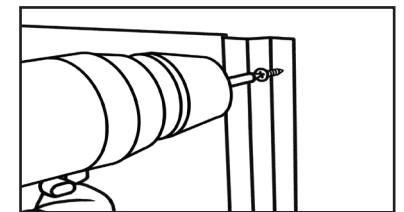


**STEP 2. INSTALL THE EXTERIOR SHIELD TRACKS**

**2A** - On each of the 24-1/2" sides, measure over 1-3/4" at the top and bottom corners. Be sure to mark all four spots.



**2B** - Using the marks as a guide, position the first exterior shield track along one side of the window opening. Raise the channel about 1/8" above the top of the window. Use 1 pan head screw to hold the exterior track in place.



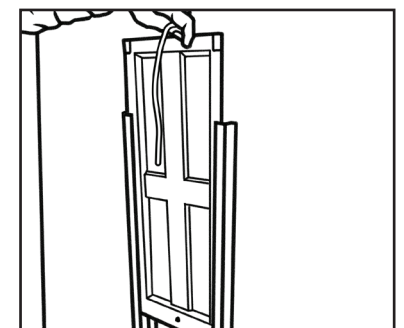
Repeat step 2B on the opposite side.

**2C** - Using 2 pan head screws, install the top half of the shield track (the short piece). Then, install the bottom half of the shield track, with about 1" of the bottom track overlapping the top track. The total length of the combined shield tracks is 46-1/4". Secure each combined track with a total of 6 pan head screws.



**STEP 3. INSTALL THE EXTERIOR SHIELD**

Drop the exterior shield into place behind the exterior shield tracks. The cord hole should be on the bottom of the shield.

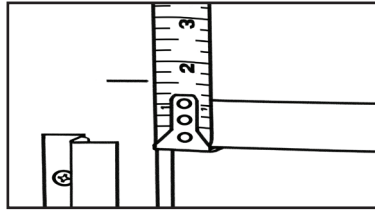
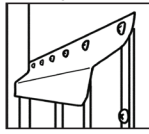


(Archery window instructions continue on the other side)

#### STEP 4. INSTALL THE EXTERIOR DRIP CAP

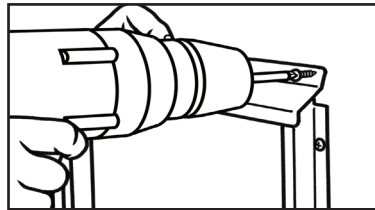
**4A** - It is critical to place the Drip Cap on top of the Shield Track as seen in the image.

Begin by making guide marks 1-9/16" above the window.



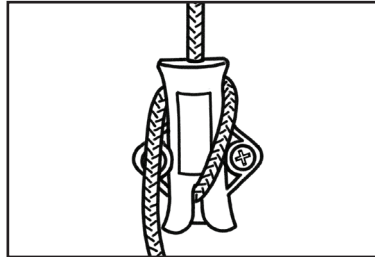
**4B** - Secure the drip cap on the right side with 1 pan head screw. Then, make sure the drip cap is level and rests on the marks. If so, secure with another pan head screw.

Use 3 evenly spaced pan head screws to finish securing the Drip Cap.

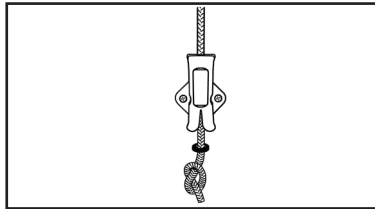


#### STEP 5. INSTALL THE DRAW CORD LOCK

**5A**-Pull the shield up and down a few times to center the cord in the window. Once you've found the center, let the shield down. Then measure 14" down from the center and mark the position. Position the Speed Cinch® over the mark, and place the tube in a vertical position. The notch should be at the bottom. Secure the Speed Cinch® with two #8 x 1" screws. Run cord through the tube.

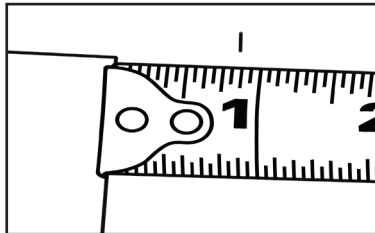


**5B** - Run the cord through the speed cinch tube. Then thread the cord through the rubber shield stop. Now tie a knot at the end of the cord. You may need to adjust the knot to make sure the shield is at or just below the window.

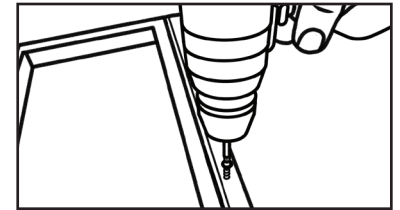


#### STEP 7. INSTALL THE INTERIOR GLASS AND FASTENERS

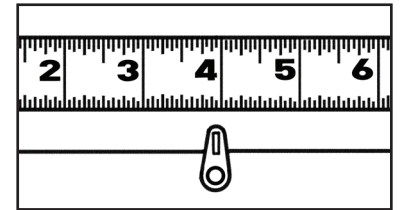
**7A** - Hold the glass and hinge over the window opening. Measure about 7/8" from the top of the window cutout and make a mark. Then measure about 7/8" from the left side of the window cutout, making marks at both the top and bottom.



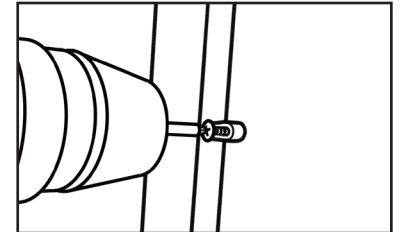
**7B** - Line up your glass window and place 3 washer head screws in the metal hinge.



**7C** - Place 2 window latches on the right side of the window. Measure 4" down from the top of the glass and 4" up from the bottom of the glass.



**7D** - Use washer head screws to secure window latches.



11/2018



**Archery Window - Silent Shadow Window System**

**SUMMIT OUTDOORS, LLC**

Fort Wayne, IN 46804 • Toll Free: 1-888-446-4868 Fax: 260-483-2070

[www.shadowhunterblinds.com](http://www.shadowhunterblinds.com)